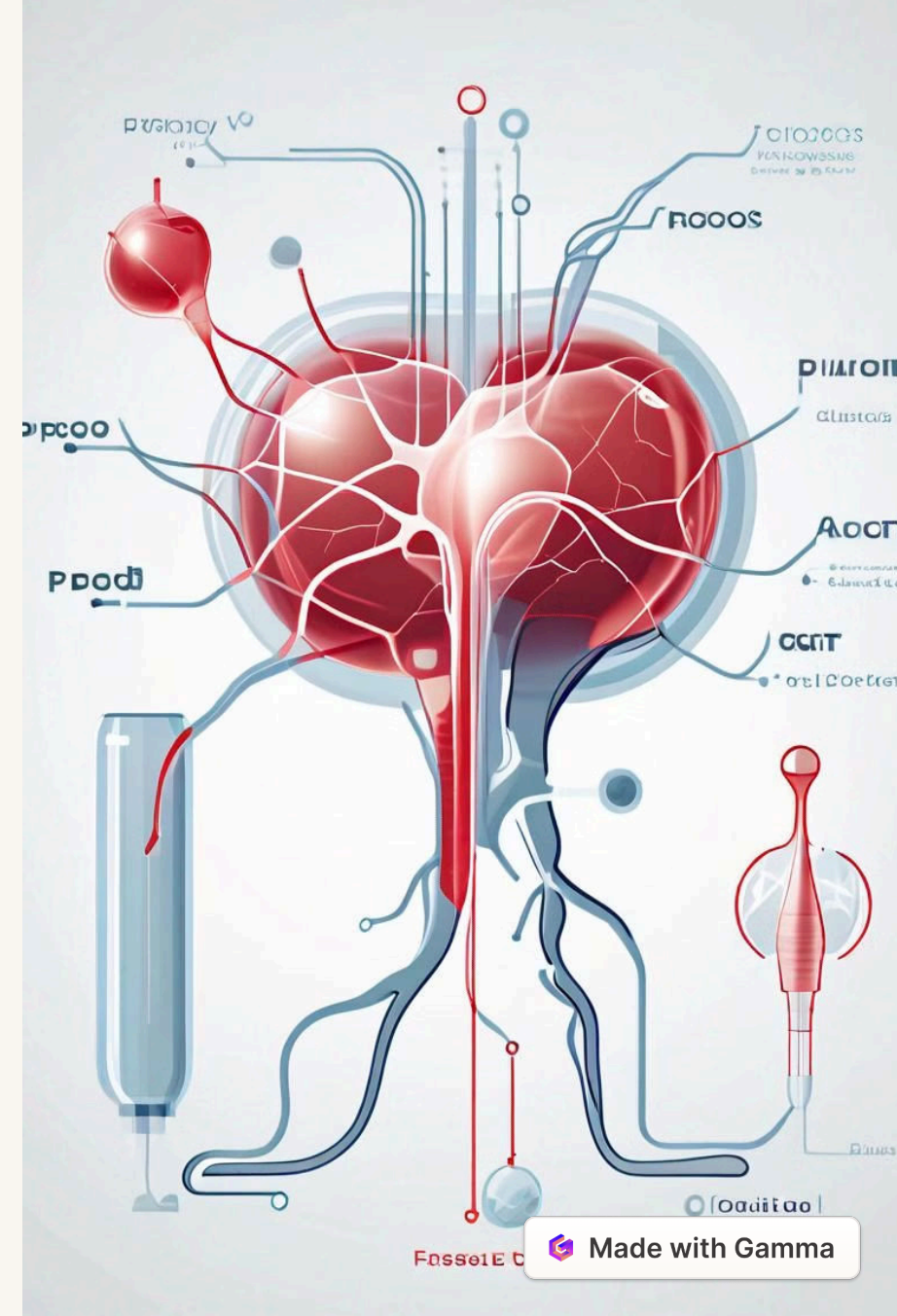


What is a Prostate Embolization?

A prostate embolization is a minimally invasive procedure that blocks the blood supply to the prostate gland. This can shrink an enlarged prostate and relieve symptoms caused by benign prostatic hyperplasia (BPH), such as difficulty urinating.



Symptoms Prostate Embolization Can Treat

Urinary Difficulties

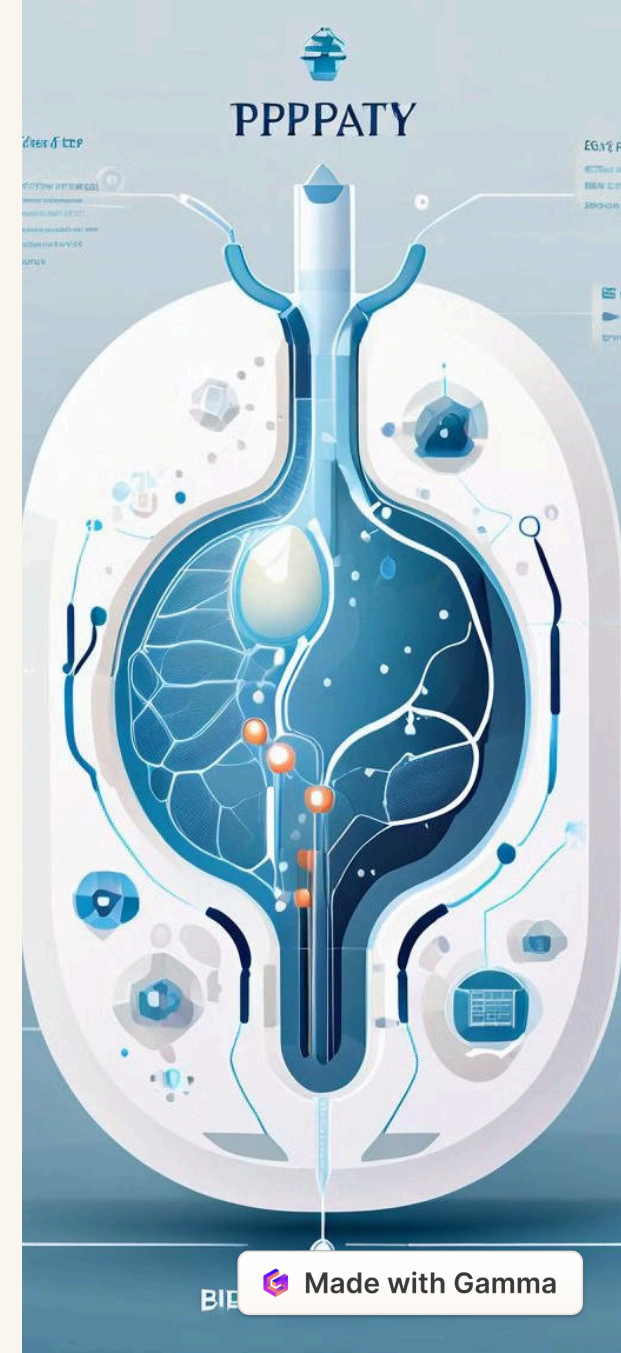
Prostate embolization can help relieve symptoms like frequent urination, weak urine stream, and the feeling of incomplete bladder emptying caused by an enlarged prostate.

Bladder Irritation

By reducing prostate size, embolization can alleviate bladder irritation and discomfort that often accompanies benign prostatic hyperplasia (BPH).

Nighttime Urination

Many men with an enlarged prostate experience disruptive trips to the bathroom throughout the night. Prostate embolization can help decrease these nighttime urination episodes.



How Prostate Embolization Works

1

Angiography

The process begins with a detailed imaging scan to map the blood vessels around the prostate.

2

Catheter Insertion

A thin, flexible catheter is carefully guided through the blood vessels to the prostate.

3

Embolization

Small particles are injected through the catheter to block the blood supply to the targeted and/or enlarged area.

Prostate embolization is a minimally invasive procedure that targets the root cause of an enlarged prostate - excessive blood flow. By blocking the arteries feeding the prostate, the procedure can cause the gland to shrink, relieving the pressure on the urethra and improving urinary function.

Potential Benefits of Prostate Embolization

Minimally Invasive

As a non-surgical procedure, prostate embolization is less invasive than traditional prostate surgery, resulting in a quicker recovery time for patients.

Immediate Symptom Relief

By blocking the blood supply to the prostate, embolization can quickly shrink the gland and provide rapid improvement in urinary function.

Avoids Surgical Risks

Since embolization does not require cutting into the body, it carries fewer risks compared to open or robotic prostate surgery.

Preserves Sexual Function

The procedure typically does not impact sexual performance, allowing men to maintain their quality of life after treatment.



Preparing for a Prostate Embolization Procedure

Consultation

Your doctor will review your medical history and discuss the potential benefits and risks of prostate embolization. They'll ensure you're a suitable candidate for the procedure.

1

2

Medication Adjustments

You may need to stop taking certain medications, like blood thinners, in the days leading up to the procedure to reduce the risk of complications.

3

Pre-Procedure Testing

Your doctor may order imaging tests, like an MRI or angiography, to map the blood vessels around your prostate and plan the embolization treatment.

The Prostate Embolization Procedure

1

Angiographic Mapping

The procedure begins with a detailed scan to map the blood vessels supplying the prostate.

2

Catheter Insertion

A thin, flexible catheter is then carefully inserted through the groin and guided to the prostate.

3

Embolization

Tiny particles are precisely injected through the catheter to block the blood flow to the prostate, causing it to shrink.

4

Completion

Once the embolization is complete, the catheter is removed, and a small bandage is applied to the incision site.

Recovery and Post-Procedure Considerations



Rest and Recovery

After the procedure, you'll need to rest for a day or two. Most patients can return to normal activities within a week.



Medication Management

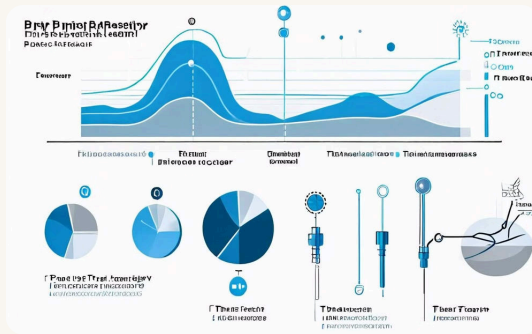
Your doctor may prescribe pain medication or antibiotics to manage any discomfort or prevent infection during the recovery period.



Follow-Up Appointments

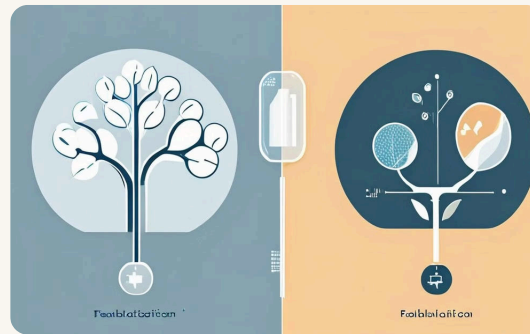
Regular check-ups with your doctor are important to monitor your progress and ensure the prostate embolization was successful.

Comparing Prostate Embolization to Other Treatments



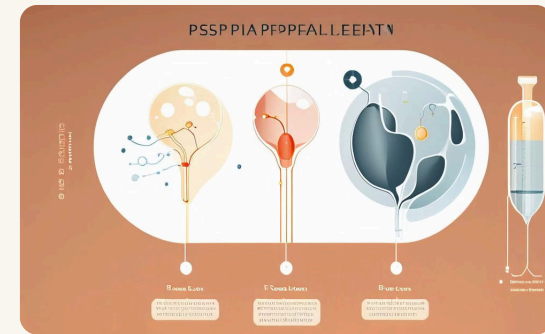
Less Invasive Than Surgery

Prostate embolization is a minimally invasive alternative to traditional prostate surgery, offering a quicker recovery and lower risk of complications.



Faster Relief Than Medication

While medications can manage BPH symptoms, prostate embolization can provide more rapid and lasting improvement in urinary function.



Preserves Sexual Function

Unlike some surgical options, prostate embolization is typically performed without affecting a man's sexual performance or quality of life.